

**Stereotactic Body Radiotherapy for Intermediate-risk Organ-confined Prostate Cancer: Interim Toxicity and Quality of Life Outcomes from a Multi-Institutional Study**

Robert Meier, MD - Swedish Radiosurgery Center, Seattle WA  
*email: bob.meier@swedish.org*

I. Kaplan<sup>2</sup>, A. Beckman<sup>3</sup>, G. Henning<sup>4</sup>, S. Woodhouse<sup>5</sup>, S. Williamson<sup>6</sup>,  
N. Mohideen<sup>7</sup>, D. Herold<sup>8</sup>, C. Cotruz<sup>1</sup>, M. Sanda<sup>2</sup>

*<sup>2</sup>Beth Israel Deaconess Medical Center, Boston, MA*

*<sup>3</sup>Central Baptist Hospital, Lexington, KY*

*<sup>4</sup>St. Joseph Mercy Hospital System, Ypsilanti, MI*

*<sup>5</sup>Community Cancer Center, Normal, IL*

*<sup>6</sup>Capital Health System, Trenton, NJ*

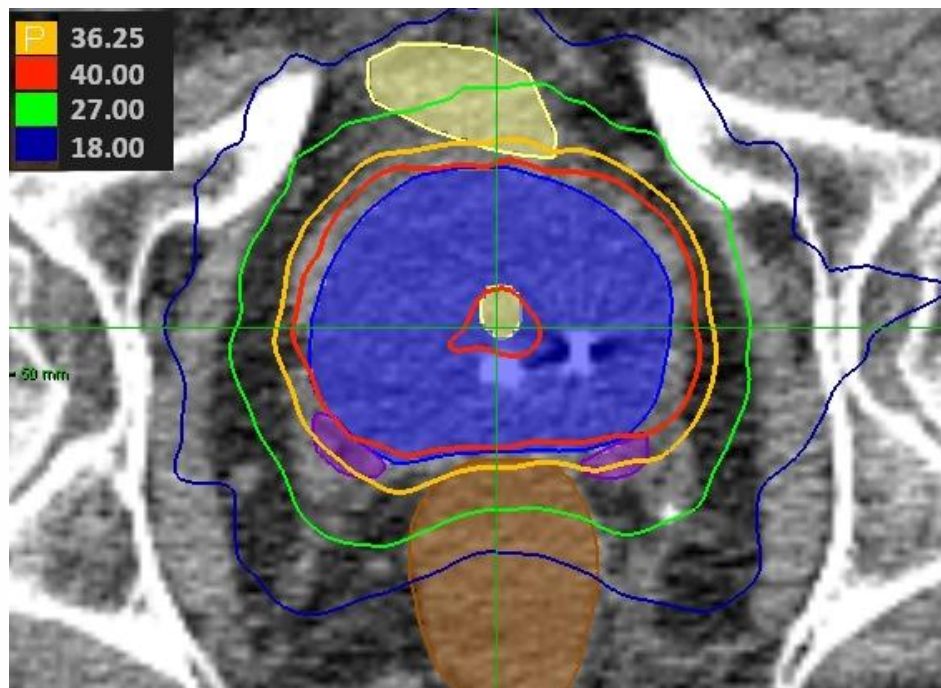
*<sup>7</sup>Northwest Community Hospital, Arlington Heights, IL*

*<sup>8</sup>Jupiter Medical Center, Jupiter, FL*



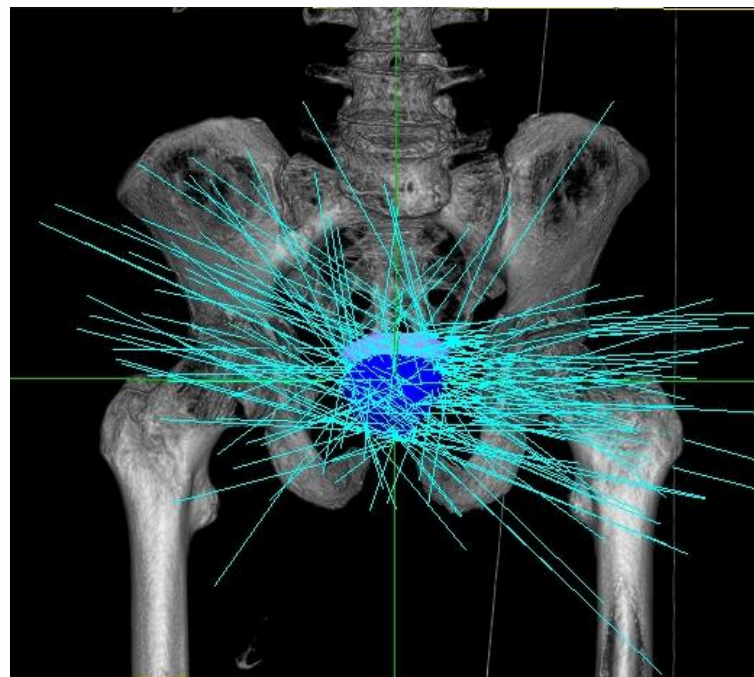
# **SBRT:** *Ultra-precise delivery of very high-dose radiation using converging, finely collimated beams*

- All patients had **stage IIA** prostate cancer: at risk for cancer death due to Gleason score 7 or PSA>10
- **129 patients** enrolled: Dec 2007 – April 2010
- **21** institutions
- Follow-up:  
2 - 4½ years,  
median **3 years**

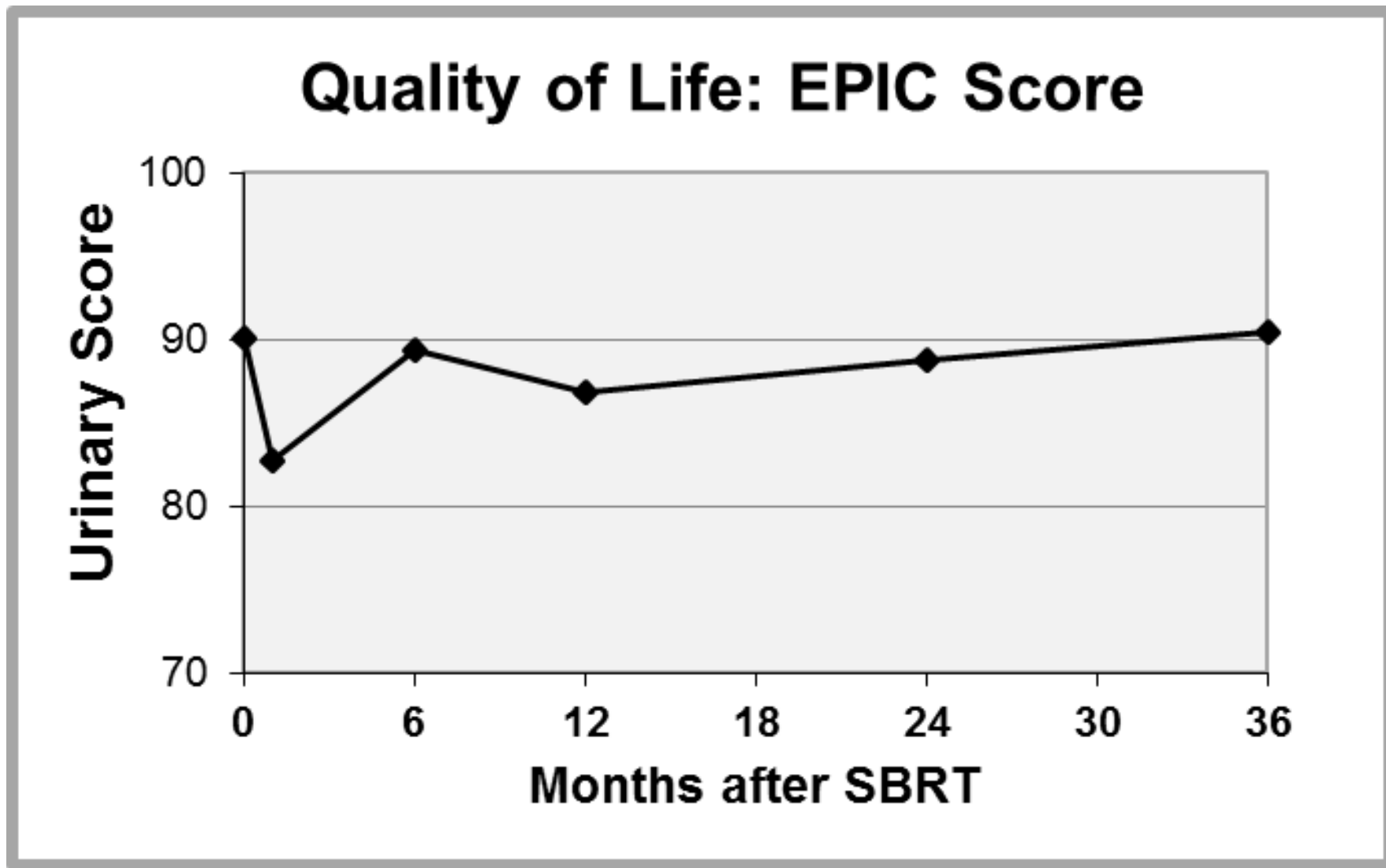


# SBRT Delivered with CyberKnife in 5 Sessions

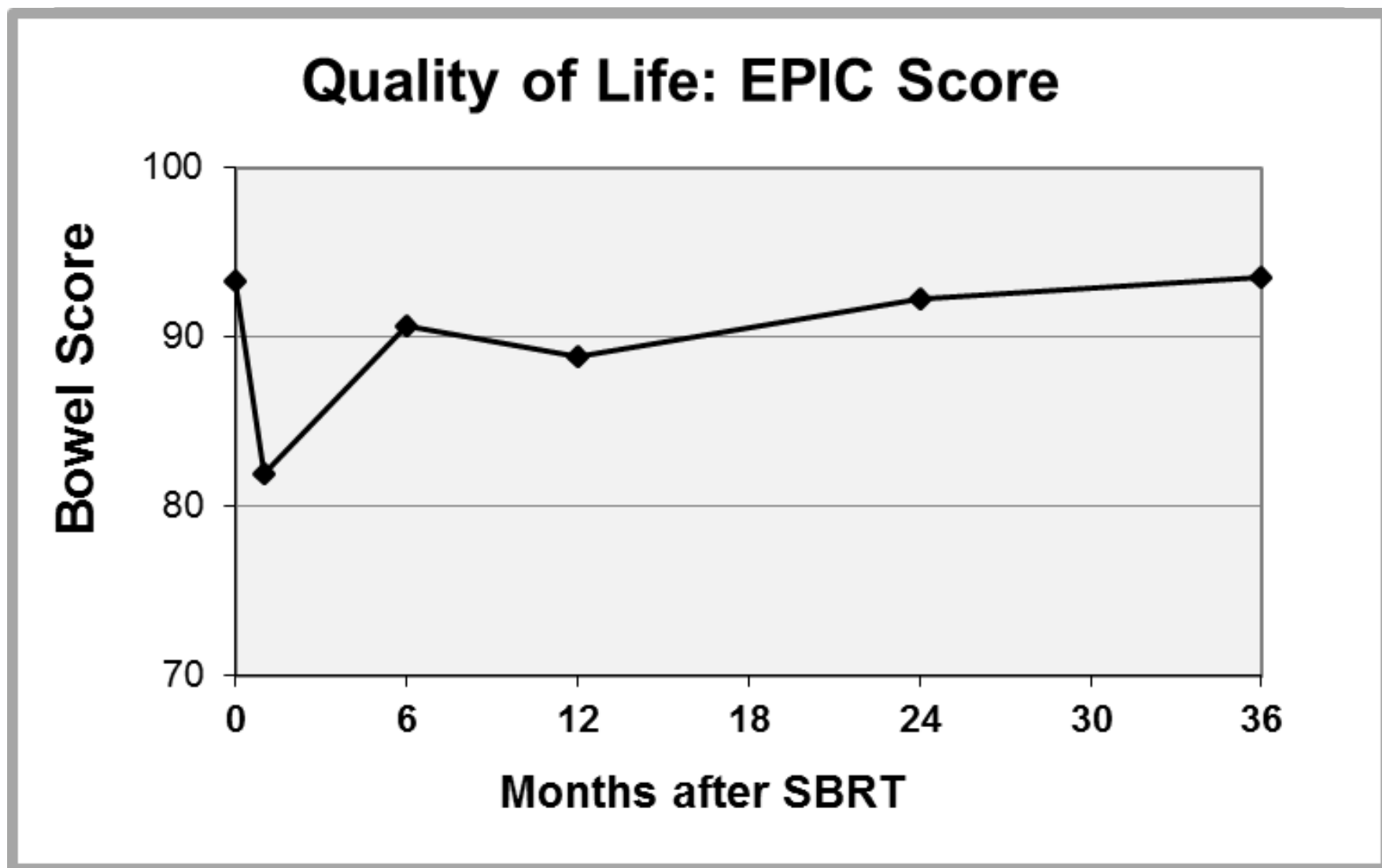
- CyberKnife concentrates over 100 radiation beams into target
- Robot continuously tracks the prostate and corrects for motion
- Treats with sub-mm accuracy
- Minimizes radiation to rectum, bladder, urethra and nerves



# Urinary Side Effects after SBRT



# Bowel Side Effects after SBRT



# Probability of Freedom From Disease

PSA failure: 2ng/ml rise *after* current nadir

